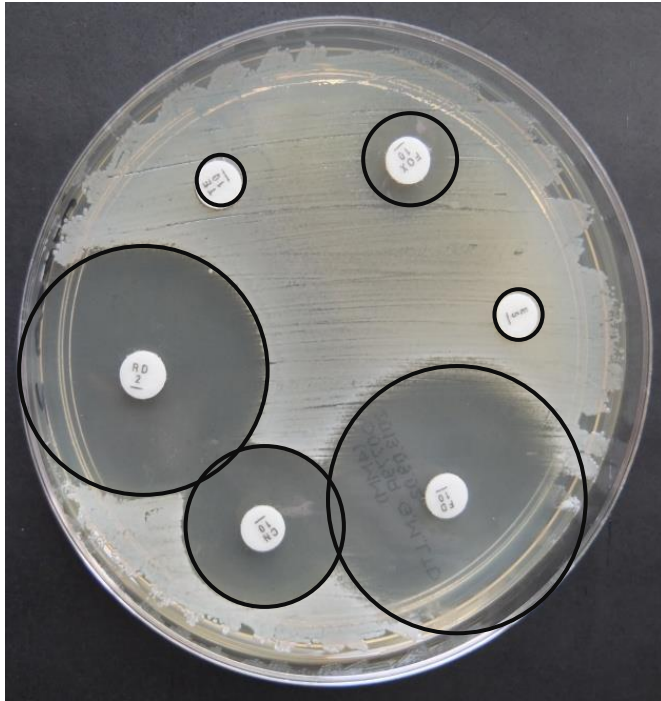


Examples and answers:

Staphylococcus aureus 1



Symbol	Antibiotic	Cut-off point (mm)	Clear zone (mm)	Resistant or Susceptible?
FOX	Flucloxacillin	22	12	R
E	Erythromycin	20	6	R
FD	Fusidic acid	30	31	S
CN	Gentamicin	20	21	S
RD	Rifampicin	30	33	S
TE	Tetracycline	20	6	R

Staphylococcus aureus 2



Symbol	Antibiotic	Cut-off point (mm)	Clear Zone (mm)	Resistant or Susceptible?
C	Chloramphenicol	15	18	S
CIP	Ciprofloxacin	14	15	S
LZD	Linezolid	20	26	S
MUP	Mupirocin	27	30	S
N	Neomycin	17	18	S
SXT	Co-trimoxazole	17	6	R