

## Over 18 Category

*Winner: Max Butler (UK)*

**The Heart of the Matter**, India ink, pen, graphite, charcoal, and gold leaf on paper



Through diagnostic testing and the development of potential treatments and vaccines, pathologists have been central in the fight against COVID-19. A pathologist's insights can have far-reaching consequences – from shaping national guidelines, to transforming patient care. In this challenging time it has been particularly clear: pathology is at the heart of healthcare.

*Runner-up: Molly Harrison (UK)*

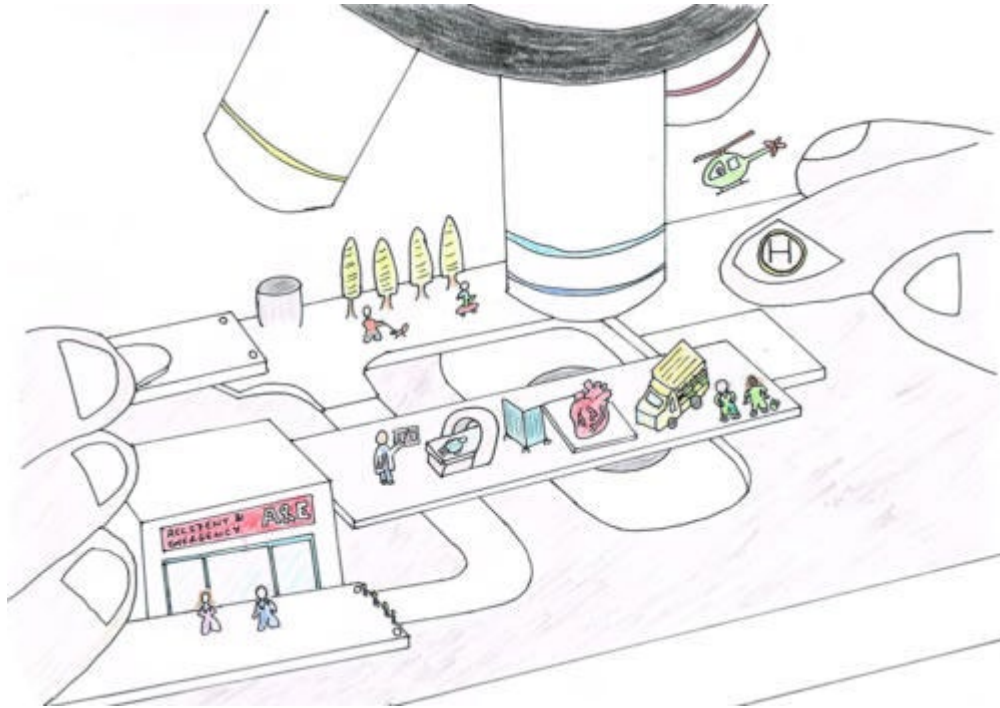
**Pathology: at the heart of healthcare, drawing**



I tried to encompass several aspects of pathology within and around an anatomical heart that is positioned in the centre of my fine liner pen drawing. To display visually that pathology is at the heart of healthcare.

*Runner-up: Douglas Donnachie (UK)*

**At the heart of our community, drawing**



This artwork was inspired by my experiences carried out in my hospital. Our healthcare system relies on the brilliance of our pathologists carrying out important diagnostic testing to treatment advise while the world outside carries on.

*Highly commended: Tamsyn Mckenna (UK)*

**The Oral Cavity is the Gateway to the Heart**, watercolour and pen



The watercolour painting (background), represents the pathology of gingival epithelium. In the foreground I have sketched a heart using BIC blue pen. The artwork encompasses how the oral cavity is the gateway to the heart. Emphasising the established connection between poor oral hygiene and the risk factor of cardiovascular disease.

*Highly commended: Caddie Laberiano-Fernandez (Texas, USA)*

**Cytology multiplex, digital art**



This is a picture about multiplex immunofluorescence in malignant pleural effusion. I wanted to share that cytology is a world a part , as each technique. Pathology is a universe of infinite possibilities and all the paths direct us to discover the disease.

*Highly commended: Meredith Herman (Michigan, USA)*

**Life magnified**, acrylic on 14'x16" canvas



What do you see? You peer into the microscope, mesmerized and bewildered, and study the slide for this case. Neurons in your brain fire as you examine the cells, nuclei, and patterns. This patient's care depends upon your expertise and final diagnosis. This slide is more than a case, a cell block or peripheral smear. It is the patient.

My inspiration arose from my enjoyment of learning pathology in medical school and during a post-sophomore Pathology Fellowship in the United states. Studying pathology and gaining hands on experience in the laboratory has helped deepen my understanding of disease, the importance of the hospital laboratory in healthcare, and the critical role pathology has in developing treatments and vaccines.

## 11–17 Category

Winner: Johnny Ma Kwok Kit (UK)

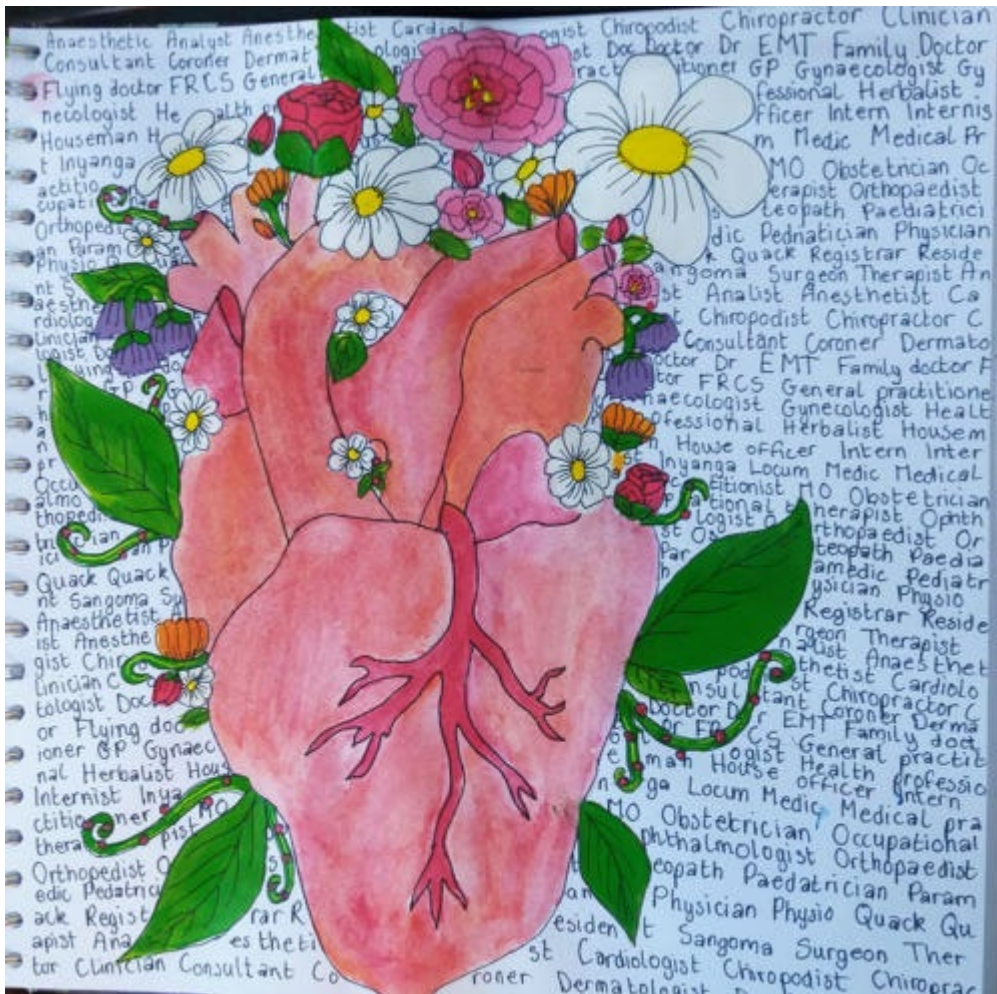
Heroes, digital art



Pathologists play a critical role in the world of healthcare; they are responsible for diagnosing patients and administering treatment. From advancing medicine to disease prevention, they play a pivotal role in the heart of healthcare. Dive down into the microscopic realm, explore the undiscovered and who knows! But more importantly, who is this pathologist, could it be you? *A side note, the pathologist in the digital art has no face because its identity remains to be confirmed, as it can be anyone.*

Runner-up: Sidonie Fleury (UK)

Art from the Heart, drawing

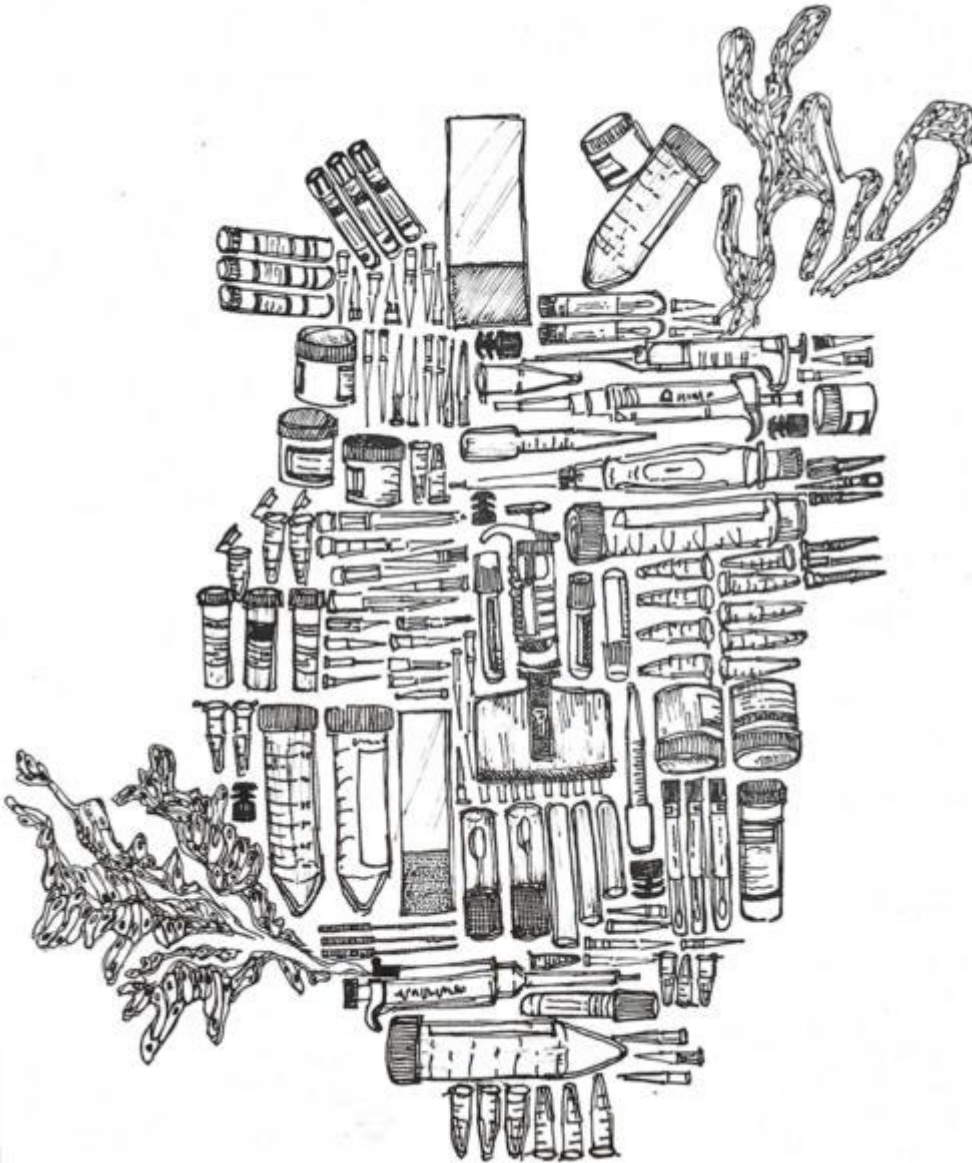


Pathology is all about tissue cells and finding cures for disease. Cancer has many different pathologies and actually that is what I based my picture on. In January my grandfather was diagnosed with heart cancer. This was truly heartbreaking as i was very close to him. I then decided to enter this painting in honour of him. At first all the words were going to be names of the people helping to find a cure for cancer but I couldn't find this so instead it is all the different types of doctors.



*Highly Commended: Ju Won Park (Illinois, USA)*

**Toolbox**, pigment ink on paper



The patient never enters the lab. However, the heart of pathology is the lab where diseases are identified and stopped in its tracks. Just like a carpenter's toolbox, a pathologist's lab is filled with equipment and supplies that are essential to the detective work.

## Under 11 Category

*Winner: Ava Pundole (Pune, India)*

**Pathology to the rescue in a sea of uncertainty, drawing**



The ship called Pathology helps doctors surgeons and other healthcare professionals to navigate the rough and predatory seas of healthcare. The sharks represent diseases, sickness and cancer etc. The boat also has a microscope which is used to navigate the seas safely and represents the ships wheel.

*Runner-up: Hannah Khasati (UK)*

**Pathology. The heart of healthcare**, collage made of magazine cuttings from different articles with fine liner pen used for the writing.



My picture shows that pathology is really important but a lot of people don't know anything about it. I didn't until I spoke to my sister. She has been working really hard in the hospital and I want to be just like her.