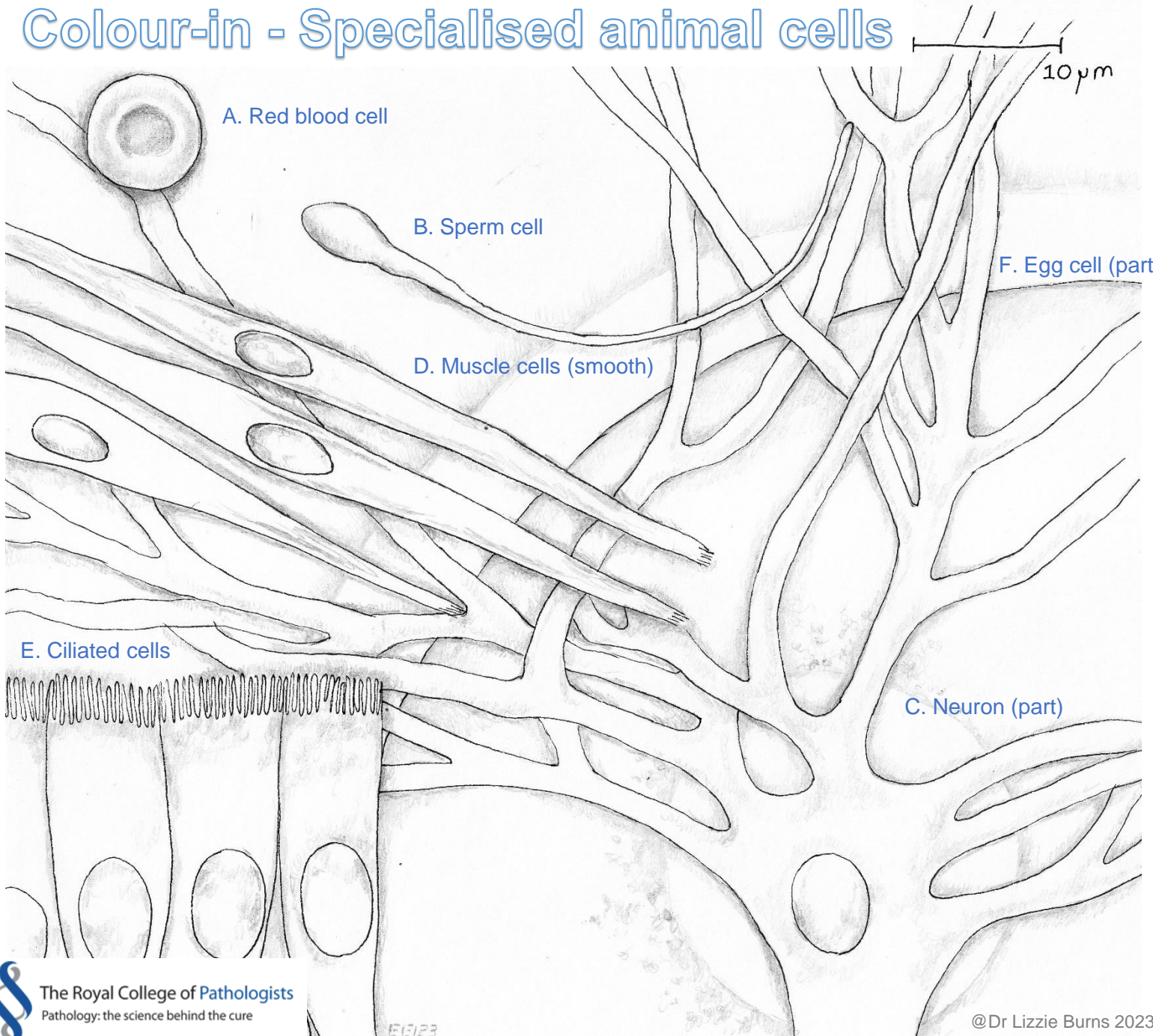


Colour-in - Specialised animal cells



Match up function and adaptation

Function

- Pushes and moves mucus
- Contracts
- Sends signals
- Contains a haploid nucleus for fertilisation
- Carries oxygen
- Contains a haploid nucleus and large cytoplasm

Adaptation

- No nucleus and packed with haemoglobin
- Has a tail and plenty of mitochondria for energy
- Long and branching to send on messages
- Able to contract and relax in bundles
- Large surface area to absorb water and food
- Contains haploid nucleus with plenty of nutrients for growth

Locations

A. blood cells are found throughout the body; **B.** sperm cells made in the testes; **C.** neurons throughout the body; particularly the brain; **D.** smooth muscle cells found in the wall of most internal organs; **E.** ciliated cells in lungs; **F.** egg cell found in the ovaries.